

# 메디덴 PRICE LIST

CAD / CAM Dental Solutions

## | Screw



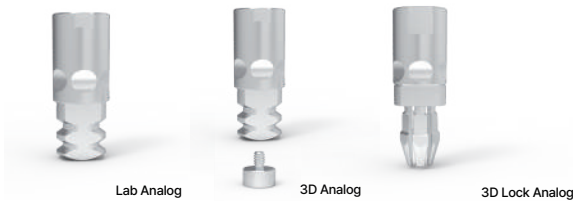
제품	수량	소비자가	패키지 할인가 [1,000만원]
HEX	1	₩ 700	₩ 600
TORX(Straumann)	1	₩ 800	₩ 700
Coating Screw	1	₩ 1,300	₩ 1,100

## | Scanbody



제품	수량	소비자가	패키지 할인가 [1,000만원]
Model	1	₩ 18,000	₩ 15,000
IntraOral	1	₩ 20,000	₩ 16,000
Holder	1	₩ 15,000	₩ 13,000

## | 3D Analog & Lab Analog



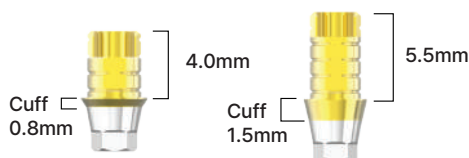
제품	수량	소비자가	패키지 할인가 [1,000만원]
Lab/3D Analog	1Set	₩ 5,000	₩ 4,000
	1Set	₩ 6,000	₩ 5,000
Lock 3D Analog	1Set	₩ 6,000	₩ 5,000

## | Premil Abutment



제품	수량	소비자가	패키지 할인가 [1,000만원]
Ø10 (20mm) + 2Screw	1	₩ 4,500	₩ 3,800
Ø10 (16mm) + 2Screw	1	₩ 4,300	₩ 3,600
Ø10 (12mm) + 2Screw	1	₩ 4,000	₩ 3,400
Ø14 (20mm) + 2Screw	1	₩ 6,500	₩ 5,500
Ø14 (16mm) + 2Screw	1	₩ 5,500	₩ 4,500
Ø14 (12mm) + 2Screw	1	₩ 5,000	₩ 4,000

## | TI-base



제품	수량	소비자가	패키지 할인가 [1,000만원]
Ø4.3	1Set	₩ 7,000	₩ 5,000

# 메디덴 PRICE LIST

CAD / CAM Dental Solutions

## Lab Driver



제품	수량	소비자가	패키지 할인가 [1,000만원]
Driver Short 	1	₩ 13,000	₩ 10,000
Driver Long 	1	₩ 16,000	₩ 13,000
Double Driver 	1	₩ 18,000	₩ 15,000
Driver Refill Tip 	1	₩ 8,000	₩ 6,000
Driver Short Set	8P+Case	₩ 122,000	₩ 95,000
Driver Long Set	8P+Case	₩ 146,000	₩ 119,000

## Polishing handle



제품	수량	소비자가	패키지 할인가 [1,000만원]
Handle 	1	₩ 10,000	₩ 7,000
Handle 7P + Case	1Set	₩ 70,000	₩ 50,000




## Reverse Adapter



제품	수량	소비자가	패키지 할인가 [1,000만원]
Adapter + Nut + M5Bolt	1Set	₩ 18,000	₩ 15,000

## | Torque Driver Adapter



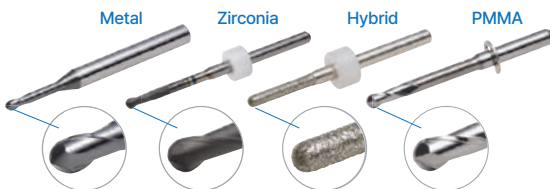
제품	수량	소비자가	패키지 할인가 [1,000만원]
Adapter + Refill Tip 	1 Set	₩ 20,000	₩ 15,000
Driver Refill Tip 	1	₩ 8,000	₩ 6,000
Torque Driver 	1	₩ 170,000	₩ 160,000
Torque Driver + Driver Refill Tip + Adapter	1 Set	₩ 190,000	₩ 175,000

## | Driver Kit



제품	수량	소비자가	패키지 할인가 [1,000만원]
Torque Ratchet 	1	₩ 70,000	₩ 60,000
Ratchet Driver Short 10mm 	1	₩ 15,000	₩ 13,000
Ratchet Driver Long 15mm 	1	₩ 15,000	₩ 13,000
14P + Torque Ratchet	1 Set	₩ 330,000	₩ 280,000

## | Dental Milling Tool



제품	수량	소비자가	패키지 할인가 [1,000만원]
Metal	1	₩ 25,000	₩ 22,000
Zirconia	1	₩35,000	₩ 33,000
Hybrid	1	₩ 35,000	₩ 33,000
PMMA	1	₩ 25,000	₩ 22,000

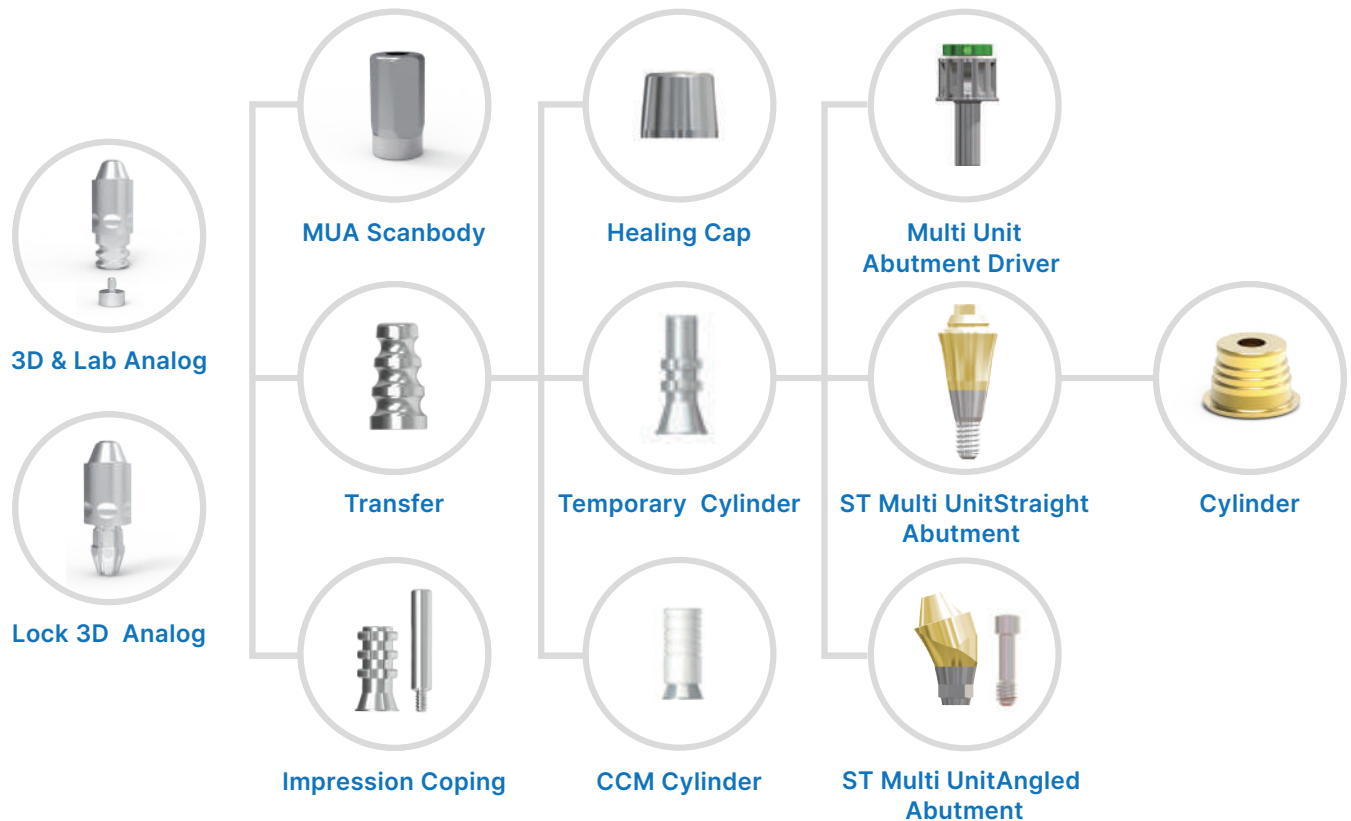
## | Titanium Anodizer Machine



제품	수량	소비자가	패키지 할인가 [5대 구매시]
Machine + 7Jigs	1Set	₩ 1,300,000	₩ 1,100,000

## I Multi unit Implant System

Prosthetic Flow Chart | Multi unit Abutment

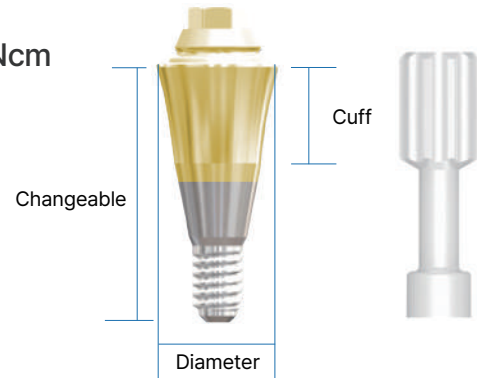


제품	수량	소비자가	패키지 할인가 [1,000만원]
Lab Analog	Analog	₩ 5,000	₩ 4,000
3D Analog	Analog + Screw	₩ 6,000	₩ 5,000
Lock 3D Analog	Lock 3D Analog	₩ 6,000	₩ 5,000
MUA Scanbody	1	₩18,000	₩ 15,000
Transfer	1	₩ 8,000	₩ 6,000
Impression Coping	1	₩ 8,000	₩ 6,000
Healing Cap	1	₩ 8,000	₩ 6,000
Temporary Cylinder	1	₩ 8,000	₩ 6,000

제품	수량	소비자가	패키지 할인가 [1,000만원]
CCM Cylinder	1	₩ 20,000	₩ 18,000
Multi Unit Abutment Driver	1	₩20,000	₩ 15,000
ST Multi Unit Straight Abutment	1	₩9,000	₩ 6,000
ST Multi Unit Angled Abutment	1	₩ 22,000	₩ 20,000
Cylinder	1	₩ 8,000	₩ 6,000

## I Multi unit Implant System

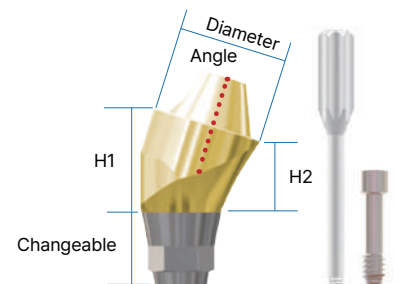
Multi Unit Straight Abutment | Tightening Torque : 30Ncm



Diameter	4.8					
Cuff(mm)	1.0	2.0	3.0	4.0	5.0	6.0
Code	STMUSA4810	STMUSA4820	STMUSA4830	STMUSA4840	STMUSA4850	STMUSA4860

## I Multi unit Implant System

Multi Unit Angled Abutment | Tightening Torque : 30Ncm



Diameter		4.8			
H1(mm)		1.0	2.0	3.0	4.0
HEX	17°	STMUAA174810HS	STMUAA174820HS	STMUAA174830HS	STMUAA174840HS
	30°	STMUAA304810HS	STMUAA304820HS	STMUAA304830HS	STMUAA304840HS
Non-Hex	17°	STMUAA174810NS	STMUAA174820NS	STMUAA174830NS	STMUAA174840NS
	30°	STMUAA304810NS	STMUAA304820NS	STMUAA304830NS	STMUAA304840NS
H2(mm)		3.0	4.0	5.0	6.0
HEX	17°	STMUAA174830HS	STMUAA174840HS	STMUAA174850HS	STMUAA174860HS
	30°	STMUAA304830HS	STMUAA304840HS	STMUAA304850HS	STMUAA304860HS
Non-Hex	17°	STMUAA174830NS	STMUAA174840NS	STMUAA174850NS	STMUAA174860NS
	30°	STMUAA304830NS	STMUAA304840NS	STMUAA304850NS	STMUAA304860NS